

EHRTap

The **data feed and migration tool** for **OpenEHR**

EHRTap enables multiple healthcare applications and tools to securely feed structured clinical data into OpenEHR, without interfering with business-as-usual operations.



Many health and care application store their clinical data in individual repositories. This presents significant challenges when trying to aggregate, analyse, and present this information.

Using EHRTap sidesteps these silos, easily connecting into relevant health and care applications and their databases.

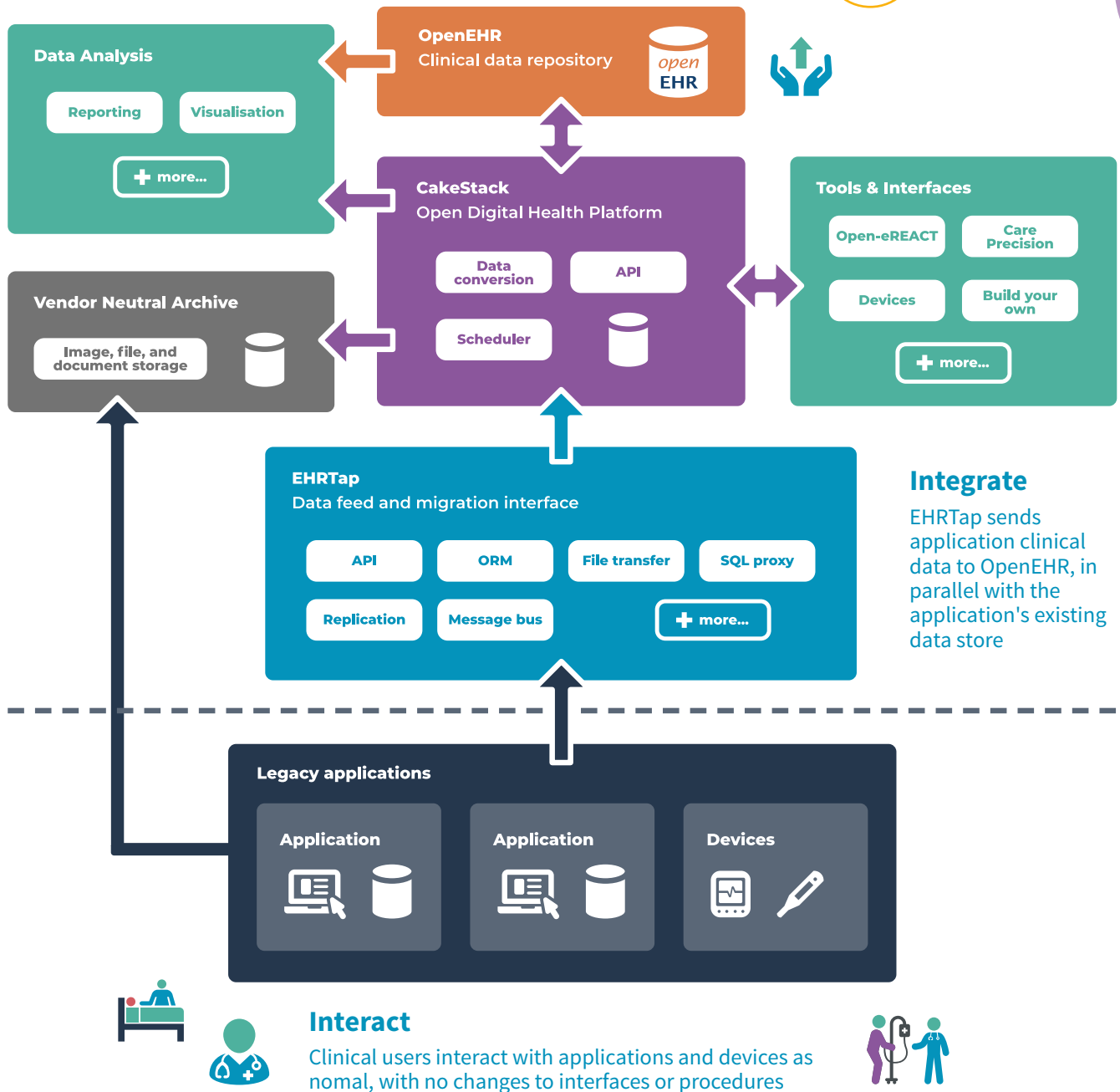
This allows data to feed into an OpenEHR CDR (Clinical Data Repository), where it is carefully stored and can be easily accessed for deeper analysis.

EHRTap uses a variety of technologies, including Object-Relational Mapping (ORM), database replication and proxying, ETL and APIs to connect to healthcare applications and systems.

Data is captured in real-time as applications are used, whilst operating outside of critical data paths to ensure users have no changes to their interfaces or procedures.

This process preserves the structured and semantic formats of clinical information, enabling detailed analysis and offering a migration path to open healthcare standards.

Provides a migration path to consolidate clinical data in OpenEHR while preserving existing interfaces



EHRTap implementation services

Hardware and network support

Configuration, customisation, and development

Integration with third-party services, applications, and data sources

Security and identity management

Training

Support and maintenance

Hosting, monitoring, and backups

Call us on
01788 298 450
to arrange a free
consultation